

Your needs ...



... Our modular solutions





Touax, another vision of modular solutions

By choosing a Touax modular building, either for rental or for purchase, you decide to offer flexibility and reactivity to your industrial projects. Our modular solutions all share the same DNA criteria: Quality, modularity, adaptability, quickness to implement, and always at minimal cost.

With our 2 factories and our 38 agencies in Europe, we are able to respond locally to all your needs and accompany your projects internationally. We will make sure you always get the adequate offer, and a consistent and efficient service wherever you settle.

For now more than 150 years, in France, Czech Republic and all around the world, men and women of Touax have been focusing on a single goal: making your project a true success. Passionate about their business, they shall always be available to advise you in your choices and supply you with quality products and services at the best price.

Because Men always makes the difference, we draw a very close attention to operational excellence and to the strict respect of delays and promises made.



Christophe Boustouller
Chief Operating Officer Modular Division



Antonín Fryč
General Manager Touax Czech Republic



Summary

History	2
Modular Solutions Division	3
Touax in Czech Republic	4
Solutions for Industry and Services	5
Solutions for Communities	6
Sports and Cultural events	7
Solutions for Construction Sites	8
Standard containers	9
Technological and storage containers	10
Flat pack, hall and stair containers	11
Equipments and options, services	12
Photo gallery	13



History

1854

Following an Imperial Decree signed by Napoleon III, Léon Molinos founded TBSO (Compagnie de Touage de la Basse Seine et de l'Oise) on 6 April 1854. It will then become SGTR (Société Générale de Touage et de Remorquage) in 1998.

1906

1st official listing of SGTR on the Paris stock exchange.

1911

André Walewski (Mr Léon Molinos's son-in-law) takes over the general management of the company.

1955

Creation and development of the railcar rental activity.

1973

Creation and development of the modular construction rental activity.

1975

Creation and development of the maritime containers activity.

1981

Beginning of international development of the company with the founding of Touax Corp in the USA, a 100% affiliate of SGTR. The Touax brand is used for the first time.

1982

Acquisition of the SLM Company - modular constructions.

1988

International development in Benelux.

1989

Acquisition of Workspace + (USA) – modular constructions.

1996

Acquisition and development of the Siko brand in Germany - modular constructions.

1998

International development in Spain.

2006

At the end of June 2006, the fleet of equipment managed by the group comes to: 200 river barges, 4.000 railcars, 400.000 maritime containers (TEU) and 30.000 modular constructions.

2007

Touax renews its brand guidelines and website.

Touax celebrates its centennial in the Stock Exchange.

Opening of The Touax Modular building factory in Mignières (France).

The new product is awarded the 2007 "Janus de l'Industrie" in France and the 2008 "Observateur du design".

Touax purchases Warex Modular Division and accelerates its developments in Eastern Europe.

2008

Touax enters the SBF 250, a stock market index representing all sectors of France economy.

Touax manages with success its capital increase and continues to accelerate its growth and development.

2009

Touax publishes excellent results for 2008: a turnover of 120 million Euros.

Touax has won the prize of the European Enterprise of the Year.

Touax is expanding in Eastern Europe, in Romania, Ukraine and Russia.

150
Years of experience

102
Years of stock quotation

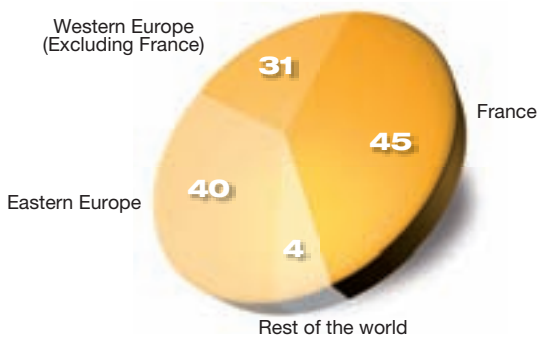
Strategy and growth

Touax modular solutions were designed and developed to meet the demands of 3 key segments: Construction, Communities, and Industry & Services. Producer and distributor of its own products, Touax now proposes, for lease and purchase, a wide range of products that can cover all your needs for space.

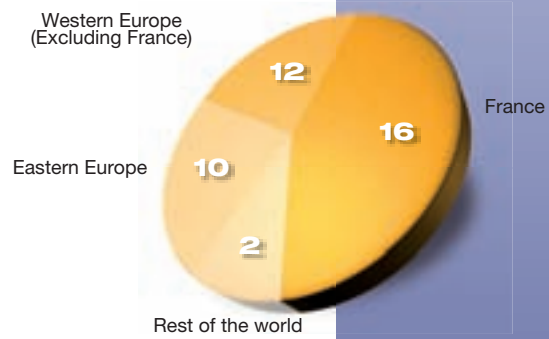
Your building: you imagine it, and we build it for you!

But above all, whether your needs evolve or not, our solutions shall stay flexible.

Distribution of turnover by country
(In millions of Euros)

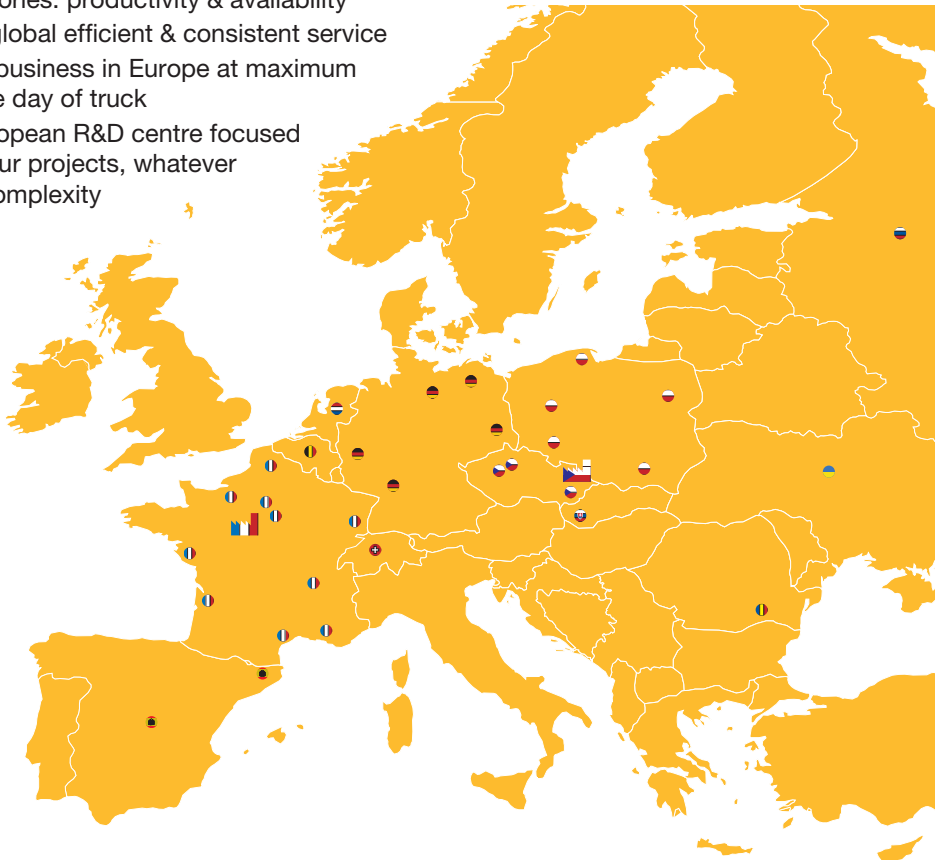


Distribution of modules by country
(In thousands)



Our international network

- 38 agencies: proximity & reactivity
- 2 factories: productivity & availability
- One global efficient & consistent service
- Your business in Europe at maximum of one day of truck
- A European R&D centre focused on your projects, whatever the complexity



2nd
European

4th
Worldwide

€ 120 Mil.
2008 turnover

850
People

3 offers
Rental, Sale, Export

40.000
Containers

2
Factories

Touax in Czech Republic

Touax Modular Solutions No. 1 in Czech Republic

Touax s.r.o is the subsidiary of the French company Touax SAS and of its Modular Solutions Division in Czech Republic. It was established by the integration of the Modular Systems Division of the company Warex Ltd in 2007. Warex has been operating and producing for Touax on Czech market since 1991. Touax specializes in the manufacturing, sales, rental and export of inhabitable, sanitary, storage and technological containers.

Touax modular buildings were created with a target to comply with demands of three core segments: industry and services, communities, and construction companies. We offer containers with various space layout, for sale or rental, depending on the customer's needs.

Our advantage is a complete solution from development to the final assembly, including the choice of equipments and options. We have a standard manufacturing capacity of more than 6500 containers yearly in our production plant of Supikovice, "Jeseniky region", and are capable of turnkey deliveries.

Touax s.r.o's yearly turnover in Czech Republic reaches approximately 1 billion Czech crowns.

Our construction providers can quickly react to demands throughout the whole country, thanks to our depots in Bohemia and Moravia, and to our dedicated salesmen and technical engineers. They are here to advise, organize, and make sure your project shall be a success.

Czech network



PRAHA – Commercial office

UHERSKÉ HRADIŠŤĚ – Commercial office and depot

CHYŇAVA – Depot

SUPÍKOVICE – Manufacturing plant

1
Manufacturing
Plant
Supíkovice

2
Commercial offices
and Depots

250
Employees

6.500
Containers Per Year

CZK 1 Bil.
2008 turnover



Solutions for Industry and Services

Applications: Offices, Shops, Gas stations, Cafeterias, Reception rooms, Points of sales, Technological containers, Media centers, Accommodation for employees ...

Offices – Prague 9, Czech Republic

The building was created as a head office for the company Rekomont, and hasn't been removed since 2000.

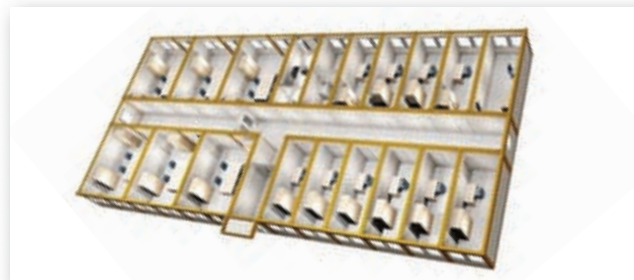
It consists of an assembly of 26 containers in single and double offices.



Number of containers	26
Useful surface	338 m ²
Number of floors	1

Facilities chosen

- Colour at the customer's request
- Automatic door closer
- Hall containers
- Some windows are located in the roof



Ski rental shop - Vysoké nad Jizerou, Czech Republic



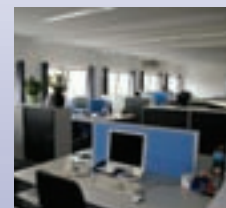
The project was dedicated for a ski and snowboard service shop.

Two sides of the building needed to be glassed-in enabling customers to have a direct view inside the shop.

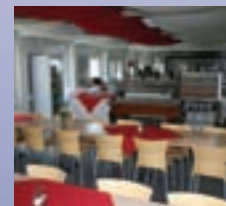
Number of containers	3
Useful surface	49 m ²
Number of floors	1

Facilities chosen

- Container width 3m
- Turn-out ventilator
- Glassed-in walls
- Heating board hung down from the ceiling
- Glassed in entrance with tipping window
- Partial electrical distribution in the floor



Open space



Cafeteria



Offices



Gas station



Quad shop

Our References

Continental
TPCA Kolín
Letiště Praha Ruzyně
Škoda Mladá Boleslav
PRIMA TV
Valeo Humpolec
Snowhill
SK SLAVIA Praha
Dektrade
CTP Incest
AAA Auto
Rekomont

Solutions for Communities

Applications: Classrooms, Kindergartens, Canteens, Sport cloakrooms, Living camps, Starting flats, Emergency stations, Sport centers and cultural sites, Laboratories ...

School's classrooms - Heiligen, Germany



Classroom



Kindergarten with attic



Sports Cloakroom



"Your first flat"



Emergency station

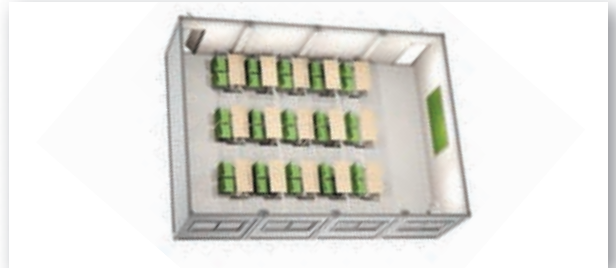
Touax modular classrooms fully conform to all local standards and requirements for buildings accepting children. They can be used as temporary or long term buildings.

Each classroom is suitable for approximately 30 students and it consists of 4 interconnected units with a total useful floor surface of 56 m².

Number of containers	56
Useful surface	728 m ²
Number of floors	3

Facilities chosen

- Furniture (benches, coat racks, lockers...)
- Toilets for children
- Roller blinds
- Equipment for child care



Single classroom

Living complex - Poschla Vsetín, Czech Republic



The living complex was established for the accommodation of local minorities in the area of Poschla Vsetín.

The project involves 2 blocks of 18 flats in different sizes. They all have standard living facilities such as: kitchenette, sanitary, beds, furniture.

Number of containers	2x48
Useful surface	1916 m ²
Number of floors	3



Single flat

Facilities chosen

- Attractive outside drawing
- Main electrical switchboard
- WC and bathroom in each flat
- Kitchenette

Our References

City council of Prague
Town of Vsetín
Town of Gütersloh FRG
Town of Heiligen FRG
Town of Flämische FRG
Town of Bad Homburg
Town of Dortmund FRG

Sports and Cultural events

Sports cloakrooms and office for SK Slavia Praha a.s., Czech Republic

This assembly was built for the Slavia Praha football Club. The ground floor is used sports cloakrooms and bathrooms for the youth teams, and the first floor is used for managers' offices.

Touax, official sponsor of SK Slavia PRAHA



Number of containers	34
Useful surface	442 m ²
Number of floors	2

Facilities chosen

- Straight stairs
- Window bars
- Corridor containers on both floors
- Electric and water pipe covers



Ground floor – Cloakrooms and bathrooms



1st floor – Offices

Cultural show rooms for the KontenerArt project in Poznań, Poland

This project involves glassed-in modern containers used as show rooms for art exhibitions in the centre of Poznań. The idea of the KontenerArt was to bring to use containers to get modern art to the streets, and making it more accessible to people.

The container as a urban product was the best mean for a temporary and living display.



Number of containers	14
Useful surface	185 m ²
Number of floors	2



Facilities chosen

- Glassed in wall
- Internal doors
- Open spaces
- Air conditioning

Solutions for Construction Sites

Applications: Living bases, Site facilities, Storage containers, Offices for on-site managers, Sanitary, Accommodations ...

Skanska CZ a.s. – Stavba tunelu Blanka, Czech Republic

This assembly is a site facility for the infrastructure project around the tunnel Blanka in Prague 6.

This construction is composed of 2 independent buildings of 3 floors each.

Number of containers	48
Useful surface	624 m ²
Number of floors	3

Facilities chosen

- Outdoor staircase
- Internal corridor
- Security grills (galvanized steel)
- Company identity stickers
- Roller blinds



Engineer offices



Site facility



Inner city sites



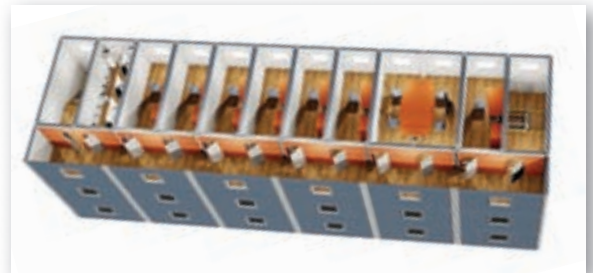
Assembly finishing



Manipulation by crane

Our References

Skanska CZ
Strabag
Geosan Group
Swiedtelsky stavební
Hochtief VSB
Tchas
Syner



Strabag a.s. – Stodůlky, Czech Republic

This "standard" living camp is dedicated to the accommodation of the construction company's staff.

The building has 2 floors and is supplemented by an outdoor staircase and an internal corridor.

Number of containers	52
Useful surface	676 m ²
Number of floors	2

Facilities chosen

- Outdoor staircase
- Toilets (WC, showers)
- Internal corridor
- Security grills (galvanized steel)
- Roller blinds
- Company identity stickers



Standard containers



Standard Assembly Sanitary

Dimensions*	External	Internal
Length (mm)	6055	5845
Width (mm)	2435	2225
Height (mm)	2790	2500

* Length from 3000 mm up to 9000 mm, width up to 3000 mm

Basic description

Frame:

Steel metal sheets, RAL 7035

Roof:

0.6mm galvanized steel sheets; 120mm mineral wool isolation ($u=0,297W/m^2K$); 0,15mm vapour barrier; 10mm chipboard laminated on both sides; 1.0kN/m² snow loading; 0.55kN/m² wind loading

Floor:

0.6mm galvanized steel sheets; 100mm mineral wool isolation ($u=0,312W/m^2K$); 0.15mm vapour barrier; 20mm laminated chipboard; 1.5mm grey PVC; 2,0kN/m² equally loaded; 0.75kN/m² loading for separating wall

Wall panels:

0.6mm galvanized steel sheets; 60mm mineral wool isolation ($u=0,528W/m^2K$); 0.15mm vapour barrier; 10mm chipboard laminated on both sides

Windows and doors:

1160x1115mm plastic window, double glass isolation ($u=1,1W/m^2K$); 800x1970mm exterior door with galvanized sheets; 800x1970mm wood interior door, steel door frame, plastic handle

Electricity:

3x230/400V, 50HZ; internal switchboard IP30; 2KW heating convector; 2x36W fluorescent lights; light switch; sockets

Sanitary facilities

Windows and doors:

575x575mm window, double glass isolation ($u=1,1W/m^2K$); 800x1970mm exterior door with galvanized sheets; 600x1970 wood door

Equipments:

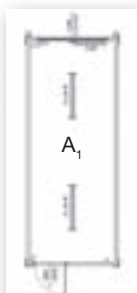
Ceramic washbasin, toilet, urinal; shower; mirror; plastic hooks



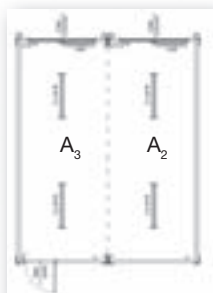
Benefits products

- Containers are stackable up to 3 stories
- Easy installation as a lego
- Interchangeable panel systems for the walls
- Variable positioning of windows and doors
- Choice of colors and company stickers
- Choice of equipments and options
- Fire protection
- Conformity to all segment standards
- ISO certificates for the production process and welding
- Certificates of quality management for the production of containers (ISO 9001-2001) and for welding (ISO 3834-2)

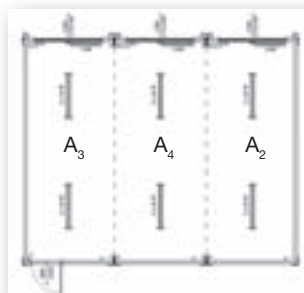
Standard configurations



Single



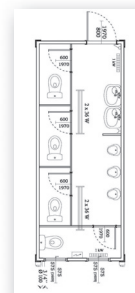
Double



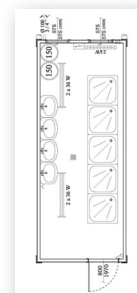
Triple



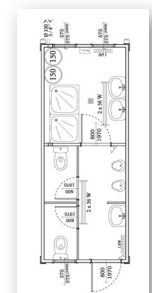
Sanitary S1



Sanitary S8



Shower S7



Sanitary + shower S3

Alternative configurations

Configurations with integrated hall



Standard B1



Sanitary S5



Sanitary + kitchenette S2



Bedroom B3

Storage containers



20' ISO container

10' ISO container

Inside container

Basic description

Frame:

High resistant in order to be shipped
Zinc coated metal sheets
Stackable
2 gaps on the lower frame for transportation by forklift
8 corner gaps for manipulation by crane

Roof:

2 mm galvanized steel sheets

Floor:

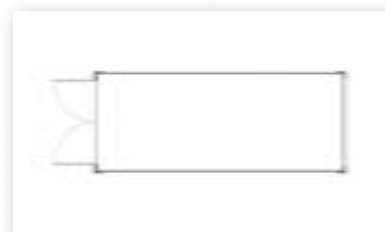
Waterproof wood cover screwed on steel grid

Walls:

2 mm galvanized steel sheets

Doors:

Galvanized steel double doors with 4 padlocks



Dimensions*	External	Internal
Length (mm)	6058	5867
Width (mm)	2438	2330
Height (mm)	2591	2350

* Length from 3000 mm up to 9000 mm, width up to 3000 mm

Technological containers

Basic description

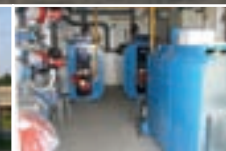
We can produce them in different sizes and characteristics, depending on your equipments (roof, windows, doors, etc.) and needs (colour, branding stickers, etc.).

Loading capacity of the floor can be increased to 18 kN/ m² in case of heavy equipment to install. Roof and walls can be reinforced in order to support the technological equipments.

Technological containers can be used as: biogas stations, photovoltaic stations, boiler rooms.



* Length from 3000 mm up to 9000 mm, width up to 3000 mm

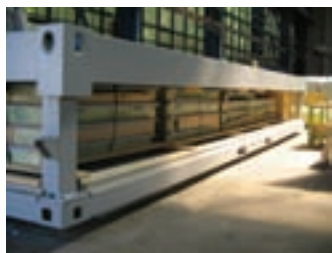


Technological container

Inside of technological container

Boiler room container

Flat pack containers



Flat pack



Project in Africa



Project in Norway



Project in Ukraine

Basic description

We can produce inhabitable containers as flat packs, the interest being to save on transportation costs. You can stack 4 flat packs on top of each other, which enables you to transport up to 8 units per truck. The assembly of each flat pack container is quick and effective. You will only need 2 people and half of a day to assemble it.

Flat packs are designed to be shipped or transported to remote locations. They can stand extreme weather conditions (snow, heat, wind, etc.).

Dimensions*	External	Internal
Length (mm)	6055	5845
Width (mm)	2435	2225
Height (mm)	2790	2500

*Length from 3000 mm up to 9000 mm, width up to 3000 mm
Height: 750 mm. We can build a flat pack out of any standard container

From factory to delivery



Hall containers



Hall containers are used to connect different containers between them, within an assembly. The characteristics of the hall container are equal to the standard container.

Hall container are available in two different lengths: 4885 mm and 7335 mm.



Length 4885 mm



Length 7335 mm

Stair containers

STAIR TOWER



Stair towers are mainly used for workers on site facilities, or as emergency exits for buildings (offices, flats, etc.).

Stair towers are made out of galvanized steel sheets.
Dimensions: 2435x4140x2790 mm

STRAIGHT STAIRS AND FOOTBRIDGE



Straight stairs are built to facilitate access outside the assembly.

Straight stairs are made out of galvanized steel sheets.
Dimensions are according to the size of the assembly.

STAIR CONTAINER



Stair containers are built to facilitate access inside the assembly, between the different floors.

Stairs are made out of galvanized steel sheets, and are stackable up to 3 stories. Dimensions are according to the size of the containers you have in the assembly.

Equipments and options

Temperature and acoustic regulation

- Air conditioning
- Electrical heaters
- Double glazing windows
- Acoustic ceilings
- Suspended ceilings

Consumption & energy

- Consumption
- Centralized temperature regulation
- Heating programming
- Automatic lighting on/off control
- Automatic taps
- Environmental norms
- Natural or low consumption lighting
- Standard and atypical windows
- Low luminance lighting

Interior design

- Furniture
- Tables, chairs, armchairs
- Lockers
- Office dividers
- Customized floor coverings (PVC, carpets, wooden...)
- Customized blinds optional

Safety

- Fire
- Alarms with smoke detectors
- Fire doors and extinguisher
- Protection
- Roller blinds
- Safety locks and handles
- Grill
- Specific items
- Handrails
- Panic bars

External customizing

- Branding
- Canopies
- Attica
- Gabled roof
- Backyard
- Facades (wood, metal)

Specific equipment

- For handicapped and infants
- Media room
- I.T. room
- File room

Accessibility

- External stairs
- Handicapped ramps
- Emergency exits



Services

Technical design and expertise within 24 hours

An R&D department composed of experts from the Construction and Public sector, electricians and engineers ready to help you design, budget and anticipate your future building.

Financing and flexibility

We offer greater flexibility in the renting or purchase of your modular constructions. We have the ability to give your projects the flexibility they need, by listening and accompanying you throughout the whole process.

Setting up and assembly

The professionals from the constructional area guarantee a perfect connection to the supplies and installation. They will be close to you and inform you about the installation progress, from the moment the keys are handed over, to the protocol of the construction.

Maintenance and after sales services within 48 hours in CZ

Our experienced technicians are there to help you make a quick intervention at your construction site. Their only concern is to allow you to be fully concentrated on your activities.

Insurance and safety

We deliver insurance that allows you to use our facility with comfort and safety. Our promise is to support your project and to advice you during your different steps.

Transport and delivery in time

Qualified teams will deliver your "construction" directly to the place you have indicated.





Offices



Commercial Agencies



School and Living



More information on www.touax.cz or at **+420 234 712 211**

BOHEMIA

Head office
Na Radosti 184
155 21 Praha 5 – Zličín

MORAVIA

Commercial offices and depot
Tř. Maršála Malinovského 269
686 01 Uherské Hradiště

BOHEMIA

Depot
Chyňava 436
267 07 Beroun

MORAVIA

Manufacturing plant
790 51 Supíkovice 7,
okr. Jeseník



Main partner of the Stade Français Paris Rugby

